

MADELEINE FLOORS®
flooring revolution

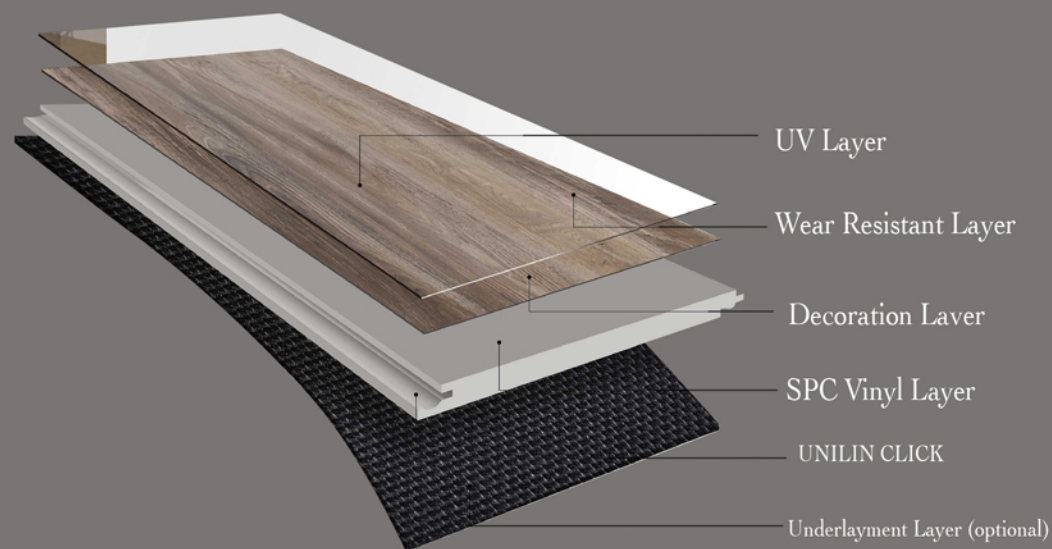


BE
AU
TIFUL

SPC

Layers of Rigid Core Luxury Vinyl Flooring are:

1. UV coating
2. Wear Layer
3. Decore film
4. Rigid SPC core
5. Attached underlayment



What is SPC

- > SPC (Stone Plastic Composite) is an engineered luxury vin that combines limestone and stabilizers to create an extremely durable core. SPC flooring is up to the task in both residential and commercial settings.
- > SPC Wooden flooring is the very much popular option for floors in use today. The pattern enables a plethora of colours and grains to be displayed side by side
- > SPC flooring is very easy in installing as well. Any layment even can install the product. IT comes with unique Uniclick technology. This glueless locking technology for flooring works perfectly for both the long and short sides of the flooring panel. In addition to that, Uniclic is a locking system that is suitable for all types of materials starting from 3.2 mm.
- > SPC flooring is constructed in a way as Engineered wood that gives it greater stability and resistance to changes in temperature and humidity.
- > The Good part is that it looks like hardwood flooring because the top floor is real, but all the underneath is an SPC rigid core which makes the product more better for commercial and recidential uses.

Advantages of SPC Flooring



100% Waterproof



Termite proof



Stain Resistant



Anti slip



Quick & Easy to install



Superior scratch resistance



Fire Resistant



Easy logistics



Pet friendly



Recyclable



Ecological



Reduce noise



Easy to clean

WARRANTY

Madeleine SPC Flooring extend warranty to the original purchaser of the product against wear through, discolor & staining. Warranty ensures that product will be free from manufacturing defects. Wear through means affected area must be visible & minimum 1 inch diameter. Scratches due to sharp edge objects dropped Or dragged over Or intentional act will not be considered under warranty. Affected layed section will be covered under replacement Or refund under warranty. Warranty will be extended on pro rata basis from the date of purchase. **Plz check details of inclusion & exclusion in warranty guidelines.**

15^{YR}

WARRANTY
RESIDENTIAL

10^{YR}

WARRANTY
COMMERCIAL



CERTIFICATIONS

CE



COLLECTION



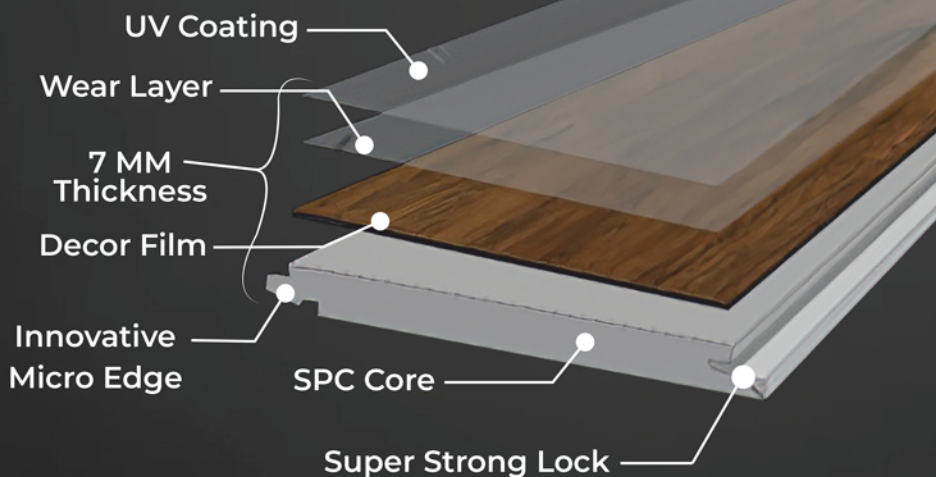
LUXURY SPC FLOORING

MADELEINE FLOORS®
flooring revolution



15 Year WARRANTY
FOR RESIDENTIAL

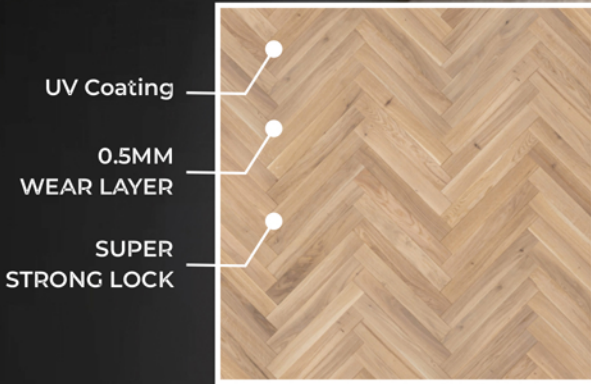
10 Year WARRANTY
FOR COMMERCIAL



MADELEINE SLIM 3.0



HERRINGBONE



FLOORING PROFILE



Skirting | Beadind
End Profile | Flat
Reducer | T Profile
L Profile | Stair nosing

MADELEINE FLOORS 
flooring revolution

QSEC 
Build Strong

PLLARS.COM[™]
— TILES & MORE —

Since last **10 years** With diverse product portfolio of Tiles, Mosaic & SPC Flooring, we have strong footprint in **55 countries**. **QSEC Tiles** has created satisfied customers globally where as **PLLARS.COM** is omni channel distribution business model for Indian Market. **MADELEINE SPC** is established with the clear goal to extend unique product portfolio in Indian & Global Market.

📍 Office No. 809, The Spire, Nr. Sheetal Park BRTS,
150ft. Ring Road, Rajkot, Gujarat-360 007

✉ info@madeleinefloors.com 🌐 www.madeleinefloors.com



Call us now!

+91 95106 76393

THICKNESS	:	3 TO 7 MM
WEAR LAYER	:	0.5 MM
SIZE	:	180 X 1220 MM
FINISH	:	MATT
INSTALLUTION METHOD	:	UNILINE

SPANISH CEDAR (QSW - 421)



THICKNESS	:	3 TO 7 MM
WEAR LAYER	:	0.5 MM
SIZE	:	180 X 1220 MM
FINISH	:	MATT
INSTALLATION METHOD	:	UNILINE

WHITE LIMBA WOOD (QSW - 422)



THICKNESS	:	3 TO 7 MM
WEAR LAYER	:	0.5 MM
SIZE	:	180 X 1220 MM
FINISH	:	MATT
INSTALLATION METHOD	:	UNILINE

SLATE GREY (QSW - 429)



THICKNESS	:	3 TO 7 MM
WEAR LAYER	:	0.5 MM
SIZE	:	180 X 1220 MM
FINISH	:	MATT
INSTALLATION METHOD	:	UNILINE

RED BEECH (QSW - 424)



THICKNESS	:	3 TO 7 MM
WEAR LAYER	:	0.5 MM
SIZE	:	180 X 1220 MM
FINISH	:	MATT
INSTALLATION METHOD	:	UNILINE

DARK WALNUT (QSW - 431)



THICKNESS	:	3 TO 7 MM
WEAR LAYER	:	0.5 MM
SIZE	:	180 X 1220 MM
FINISH	:	MATT
INSTALLATION METHOD	:	UNILINE

MAPPLE WOOD WHITE (QSW - 428)



THICKNESS	:	3 TO 7 MM
WEAR LAYER	:	0.5 MM
SIZE	:	180 X 1220 MM
FINISH	:	MATT
INSTALLATION METHOD	:	UNILINE

TRES NATURALE (QSW - 433)



THICKNESS	:	3 TO 7 MM
WEAR LAYER	:	0.5 MM
SIZE	:	180 X 1220 MM
FINISH	:	MATT
INSTALLATION METHOD	:	UNILINE

CREAM BONE (QSW - 432)



THICKNESS	:	3 TO 7 MM
WEAR LAYER	:	0.5 MM
SIZE	:	180 X 1220 MM
FINISH	:	MATT
INSTALLATION METHOD	:	UNILINE

OAK WOOD GREY (QSW - 435)



THICKNESS	:	3 TO 7 MM
WEAR LAYER	:	0.5 MM
SIZE	:	180 X 1220 MM
FINISH	:	MATT
INSTALLATION METHOD	:	UNILINE

ANTIQUE PINE (QSW - 436)



THICKNESS	:	3 TO 7 MM
WEAR LAYER	:	0.5 MM
SIZE	:	180 X 1220 MM
FINISH	:	MATT
INSTALLATION METHOD	:	UNILINE

CHESTNUT CHERRY (QSW - 441)



THICKNESS	:	3 TO 7 MM
WEAR LAYER	:	0.5 MM
SIZE	:	180 X 1220 MM
FINISH	:	MATT
INSTALLATION METHOD	:	UNILINE

BRUNETTE WOOD (QSW - 442)



THICKNESS	:	5 MM
WEAR LAYER	:	0.3 MM
SIZE	:	180 X 1220 MM
FINISH	:	MATT
INSTALLATION METHOD	:	I4F

MYSTIC MAHOGANI (8010)



THICKNESS	:	5 MM
WEAR LAYER	:	0.3 MM
SIZE	:	180 X 1220 MM
FINISH	:	MATT
INSTALLATION METHOD	:	I4F

AMERICAN OAK (1179)



THICKNESS	:	3 TO 7 MM
WEAR LAYER	:	0.5 MM
SIZE	:	180 X 1220 MM
FINISH	:	MATT
INSTALLUTION METHOD	:	UNILINE

HONEY WOOD (QSW - 443)



THICKNESS : 3 TO 7 MM
WEAR LAYER : 0.5 MM
SIZE : 180 X 1220 MM
FINISH : MATT
INSTALLUTION METHOD : UNILINE

COSMOS CARRARA (QSW - 444)



THICKNESS	:	3 TO 7 MM
WEAR LAYER	:	0.5 MM
SIZE	:	180 X 1220 MM
FINISH	:	MATT
INSTALLUTION METHOD	:	UNILINE

NEUTRAL GREY (QSW - 445)



Property	Test Method	Result
Dimensions	EN 427	1220*180mm
Thickness Over All	EN 428	3.0 mm, 4.0 mm, 5.0 mm, 7.0 mm
Thickness Wear Layer	EN 429	0.3 mm, 0.5 mm
Pell Strength of Layers	EN 431	Pass
Shear Forces of Layers	EN 432	Good
Residual Indentations	EN 433	Mean Value ≤ 0.1mm
Dimension Stability	EN 434	Shrinkage ≤ 0.12%/Curling ≤ 1.2mm
Resistance to Chemicals	EN 423	Class 0
Castot Chair Continuous	EN 425	No Disturbance/No Delamination
Light Fastness	ISO 105 B02	≥ 6
ASTM E84-03	NFPA Class B1	
Slip Resistance	DIN 51130	R9

SERIES	SIZE	THICKNESS	CORE	IXPE PAD	WEAR LAYER	PACKING	COVERAGE/BOX
REINDEER	180*1220	7 MM	6 MM	1 MM	0.5 MM	8 PLANK/BOX	18.90
SLIM 3.0	185*1225	3 MM	3 MM	—	0.5 MM	20 PLANK/BOX	48.76
LINEA	180*1220	5 MM	4 MM	1 MM	0.3 MM	12 PLANK/BOX	28.35

How to install the SPC Flooring?

Adjust row so end cut is not less than 8".

Use shims to allow 3/8" expansion gap between the planks and the walls, or stationary interior room objects, so there is room for normal expansion and movement.

Starting from the LEFT with the tongue facing the wall, carefully place the first board in place.

Align the next piece by overlapping the short end of the first board, Engage the short end at a 45° angle of the tongue and groove.

The board must be flat to engage completely. Tap lightly into place by using a rubber mallet and tapping block to firmly lock short end. Continue in this manner until reaching the final plank in the first row.

Cut the final board piece to length.

Begin the second row with the cutpiece from the first row. If the cut piece is shorter than 8" (20cm), do not use it. Instead, begin with a new board to the left as necessary to align the edges of the end joint of the first row.

Carefully push the board down until the gongue and groove lock together on the long side and ends.

Position the first board of the second row in place by engling it up slightly, pushing forward and interlocking the long side of the tongue. Slide the board to the left as necessary to align the edges of the end joint of the first row.

Carefully pushthe board down until the tongue and groove lock together on the long side and ends.

Install second board of the second row (same as step 4 above). Slide close to the end joint without touching it. Ensure board lays flat.

Attach a scrap piece of floor to bridge gap between ends of planks.

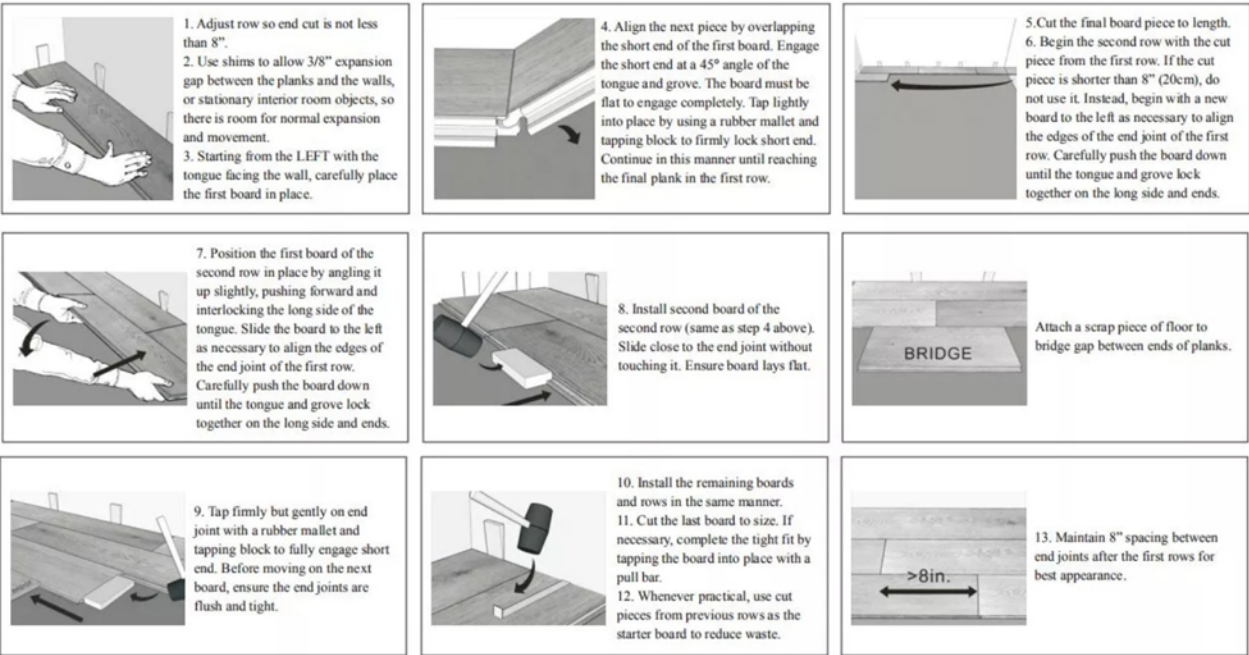
Tap firmly but gently on end joint with a rubber mallet and tapping block to fully engage short end. Before moving on the next board, ensure the end joints are flush and tight.

Install the remaining boards and rows in the same container.

Cut the last board to size. If necessary, complete the tight fit by tapping the board into place with a pull bar.

Whenever practical, use cut pieces from previous rows as the starter board to reduce waste.

Maintain 8" spacing between end joints after the first rows for best apperance.



MADELEINE FLOORS

flooring revolution



BAEUTY

OFFICE ADDRESS:-

809-THE SPIRE, NEAR SHITAL PARK BRTS, 150 FEET RING ROAD, RAJKOT-360007, GUJARAT (INDIA).

FACTORY ADDRESS :-

SURVEY NO.92/P5-P1, 93-P1/P2/P4/P5, VILLAGE HARIPAR, BESIDES SAHKAR COTTON,
TANKARA-LATIPER HIGHWAY, TANKARA-360110, GUJARAT (INDIA).

FLORIM DECORATIVES GLOBAL PVT. LTD.

GST:-24AAECF0397A1Z3

Domestic sales inquiry

✉ info@madeleinefloors.com

☎ 94298 55974